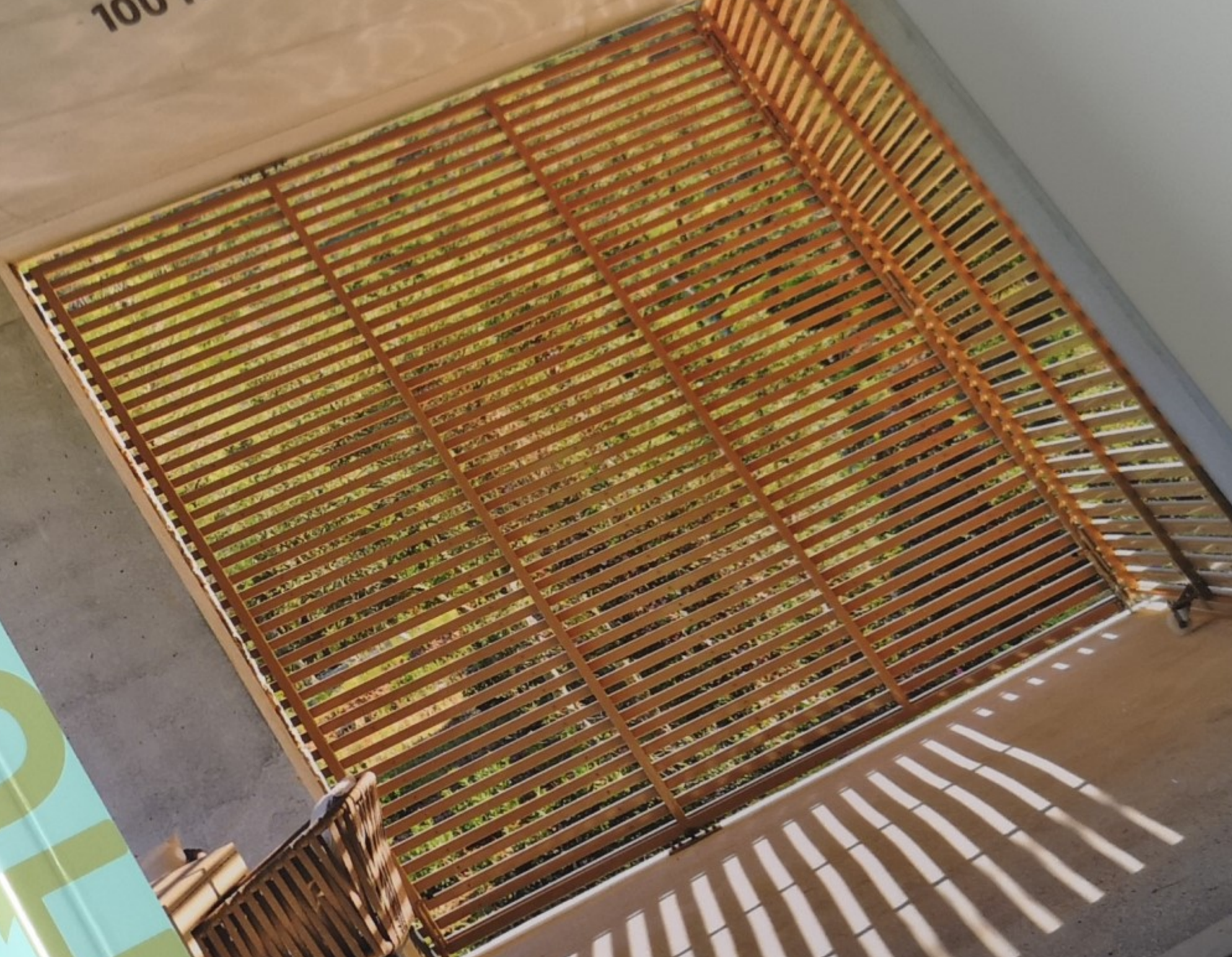


100 Houses NATURE AND NURTURE

100 HOUSES



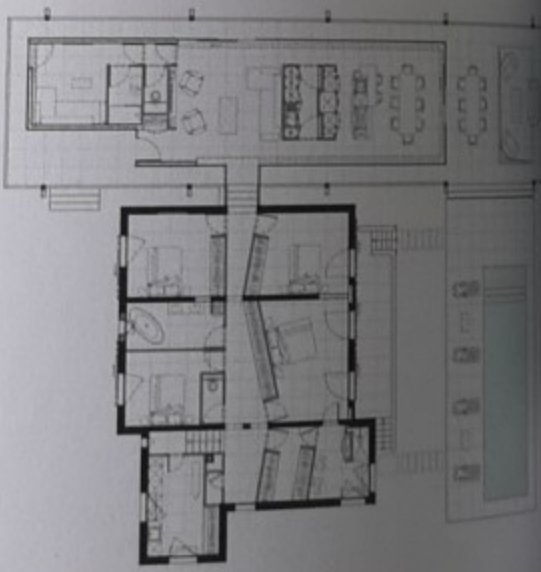
MAISON CTN

Bregues Le Pavec architectes / 2018
Montpellier, France



Referencing the Farnsworth House by Mies van der Rohe, the rational and assertive typology of this unique structure creates a stark but highly effective juxtaposition with the lush green surrounds. Intended as an expansion of the compact and opaque original dwelling, the new structure creates open and expansive spaces for daytime living.

The black metal frame and alternating volumes of glass afford complete transparency, while the staircase—the only physical contact with the original house—allows various levels to connect. The overall horizontality of the structure was intended to emphasize the random placement of vegetation and trees in the surrounding parkland. Another interesting design component is the innovative use of light, which marks the transition between the old and new structure, highlighting the different epochs represented on the property.



Ground-floor plan

